

Species with Potential Economic Benefits, Known Environmental (*and Economic*) Impacts:

Northern Pike (*Esox lucius*)



Northern Pike

(*Esox lucius*)



- Voracious ambush predator
 - Can consume prey (fish, ducks, bats, etc.) up to 60% of their body length
- State record in Montana (via FWP)
 - ~40 lbs and ~4 feet long!
- Non-native to Columbia River Basin
 - Introduced elsewhere legally and illegally
- Non-native in Montana outside of Saskatchewan River drainage

Montana Range

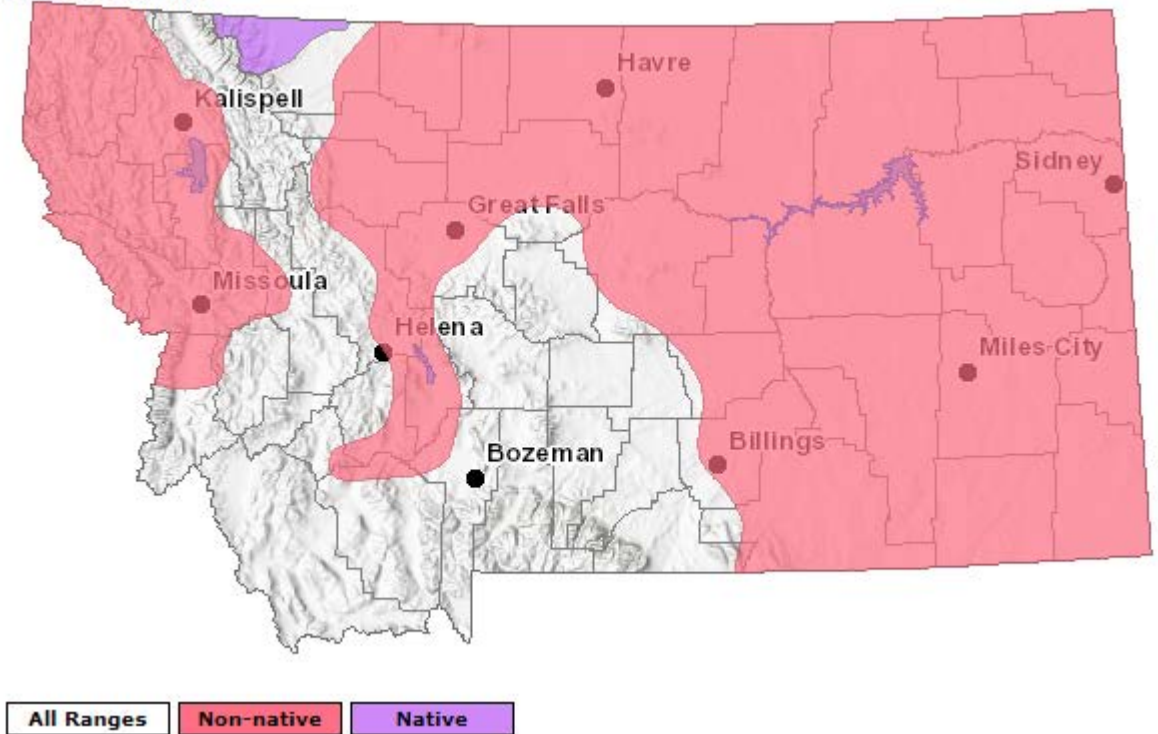


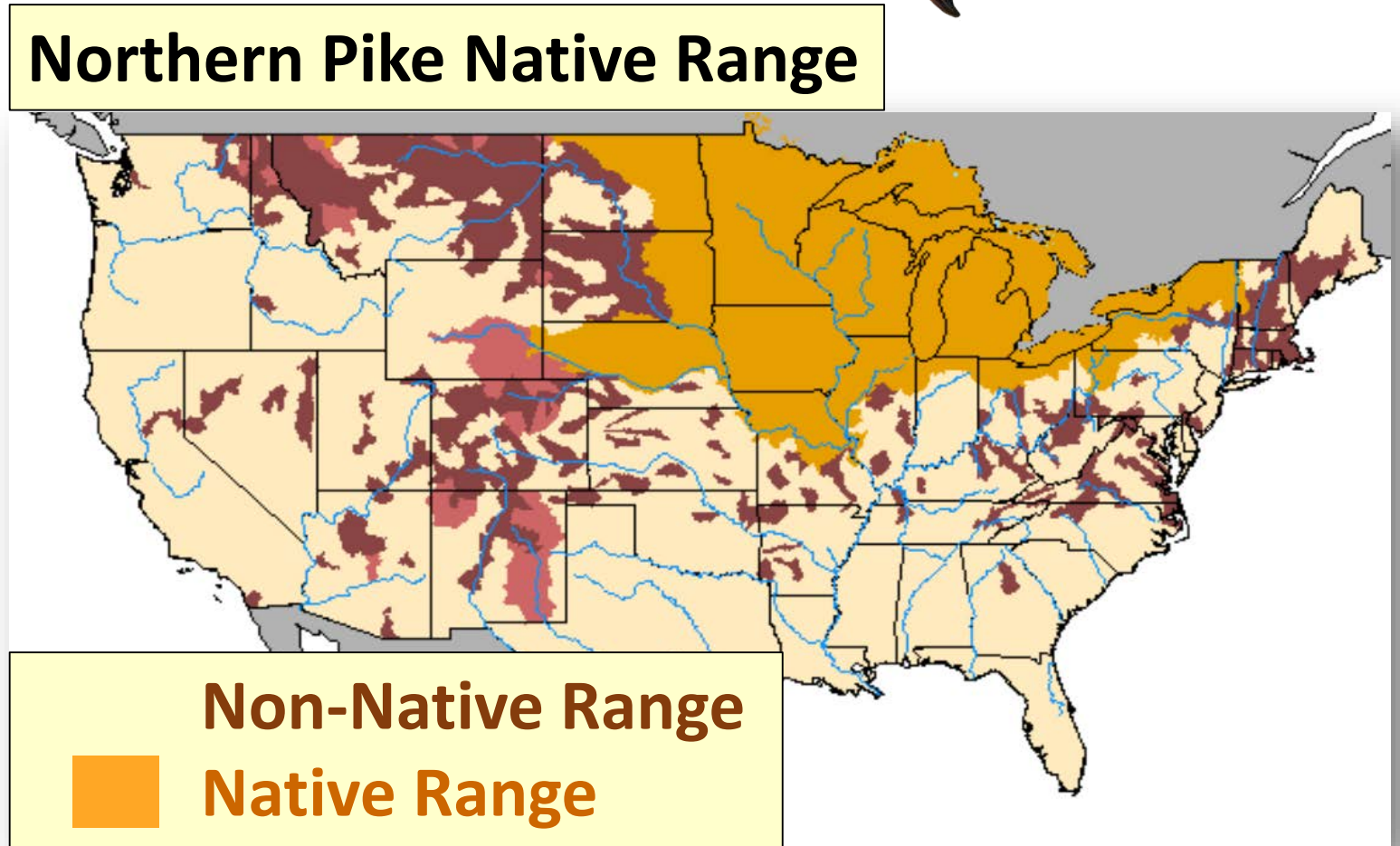
Image Credit: <http://fieldguide.mt.gov>

Northern Pike

(Esox lucius)



- Montana
 - Native and Introduced Game Fish
- Idaho
 - Introduced Game Fish
- British Columbia
 - Native Game Fish and Invasive Species
- Washington
 - Invasive Species
- Oregon
 - Invasive Species
- Alaska
 - Native Game Fish and Invasive Species



Map created on 5/6/2017, United States Geological Survey

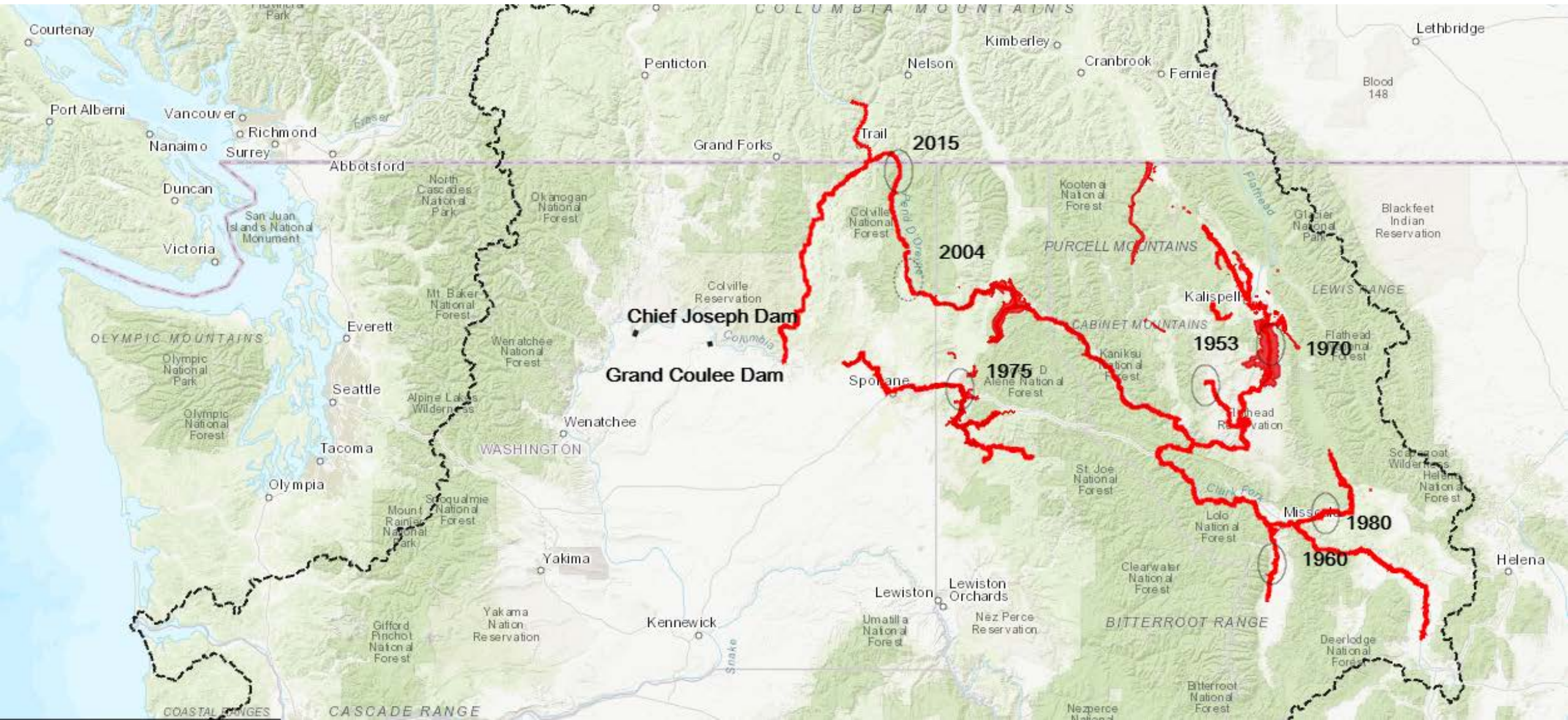


Image Credit: State of Washington Governor's Salmon Recovery Office

Northern pike are only two dams away (89 river miles) from important Columbia River salmon spawning habitat, where Washington has invested billions in salmon and steelhead recovery.

Northern Pike



Chinook Salmon

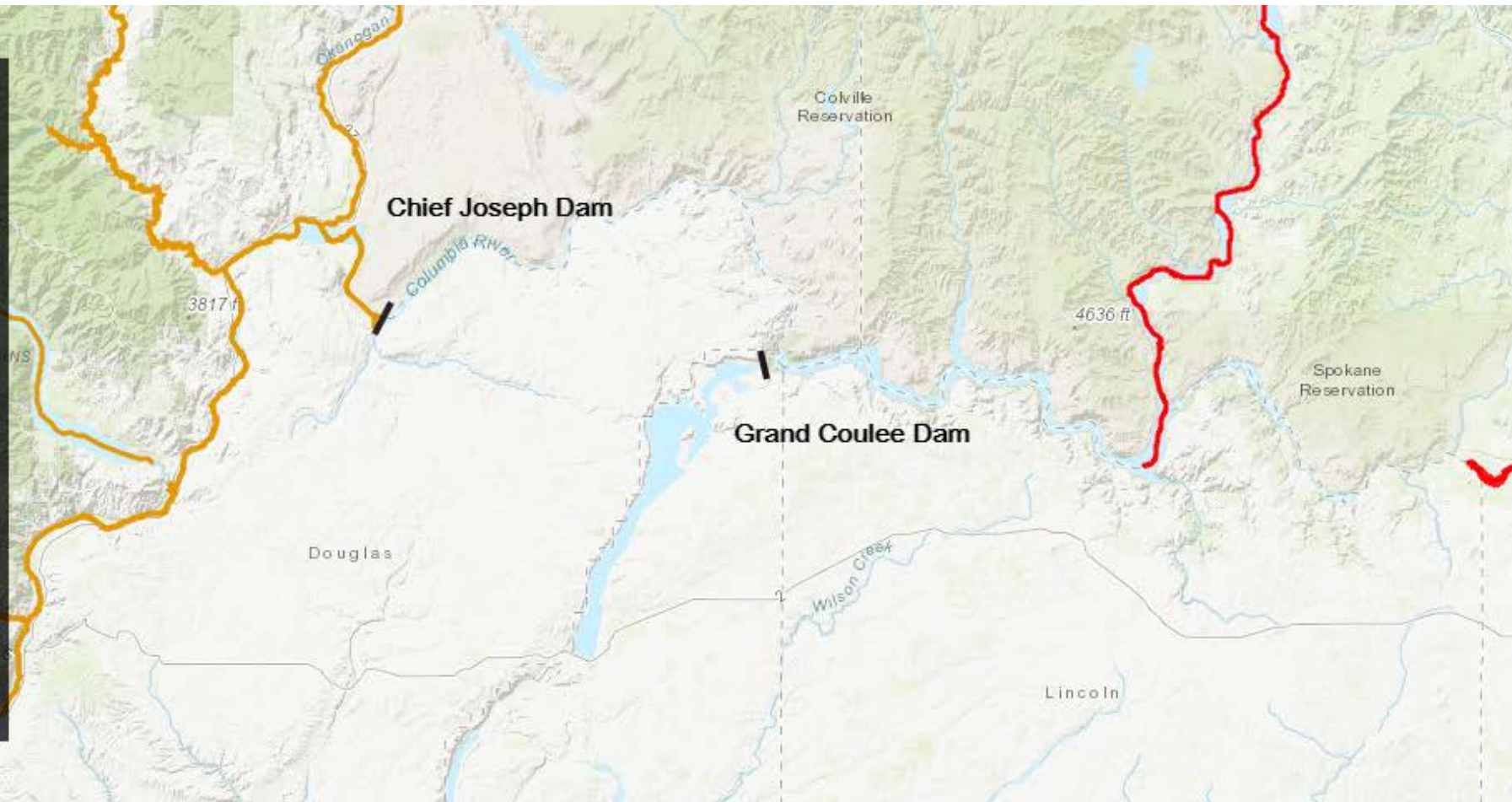


Image Credit: State of Washington Governor's Salmon Recovery Office

Northern pike are only two dams away (89 river miles) from important Columbia River salmon spawning habitat, where Washington has invested billions in salmon and steelhead recovery.

Northern Pike



Chinook Salmon

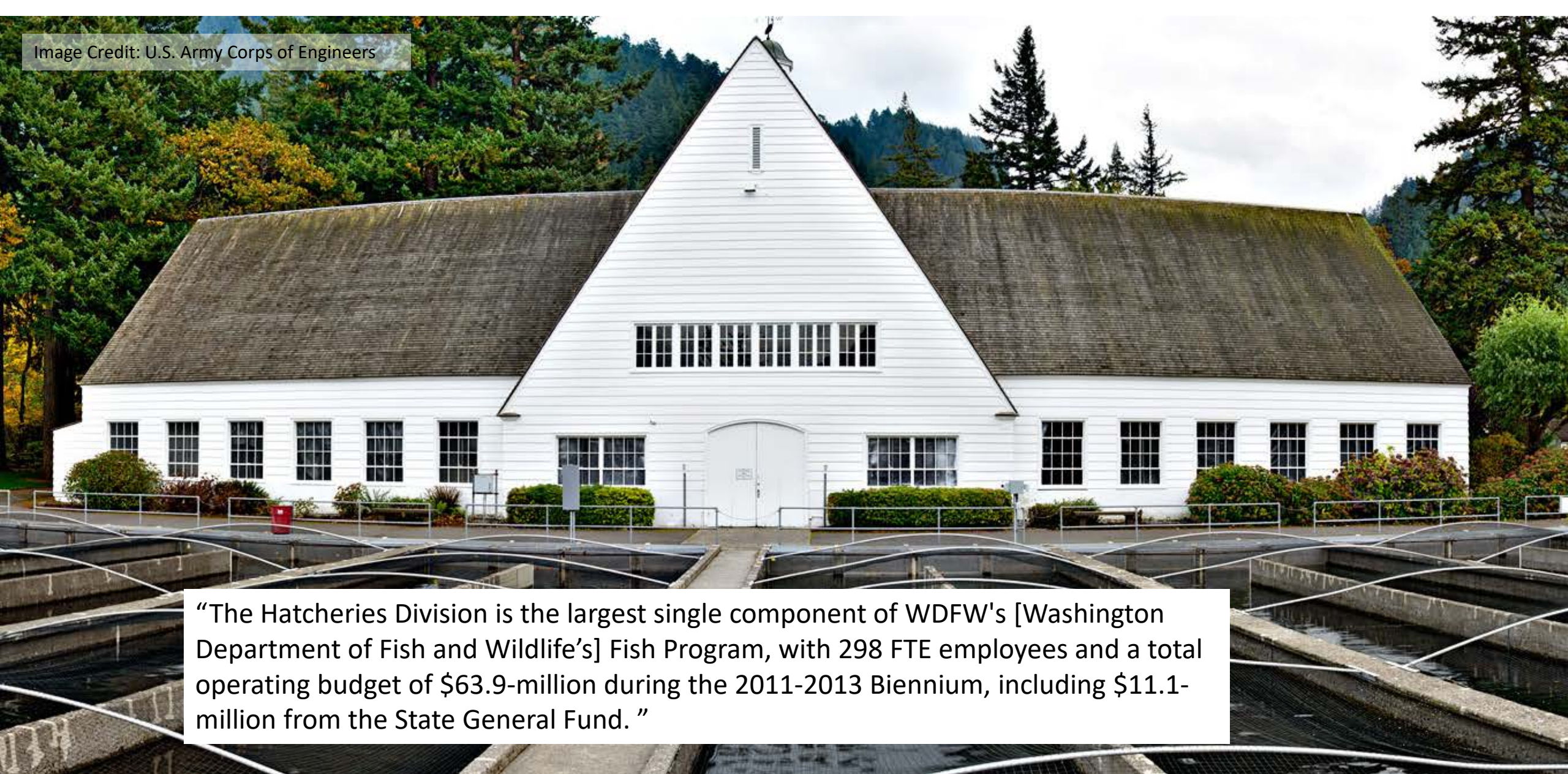


Image Credit: State of Washington Governor's Salmon Recovery Office

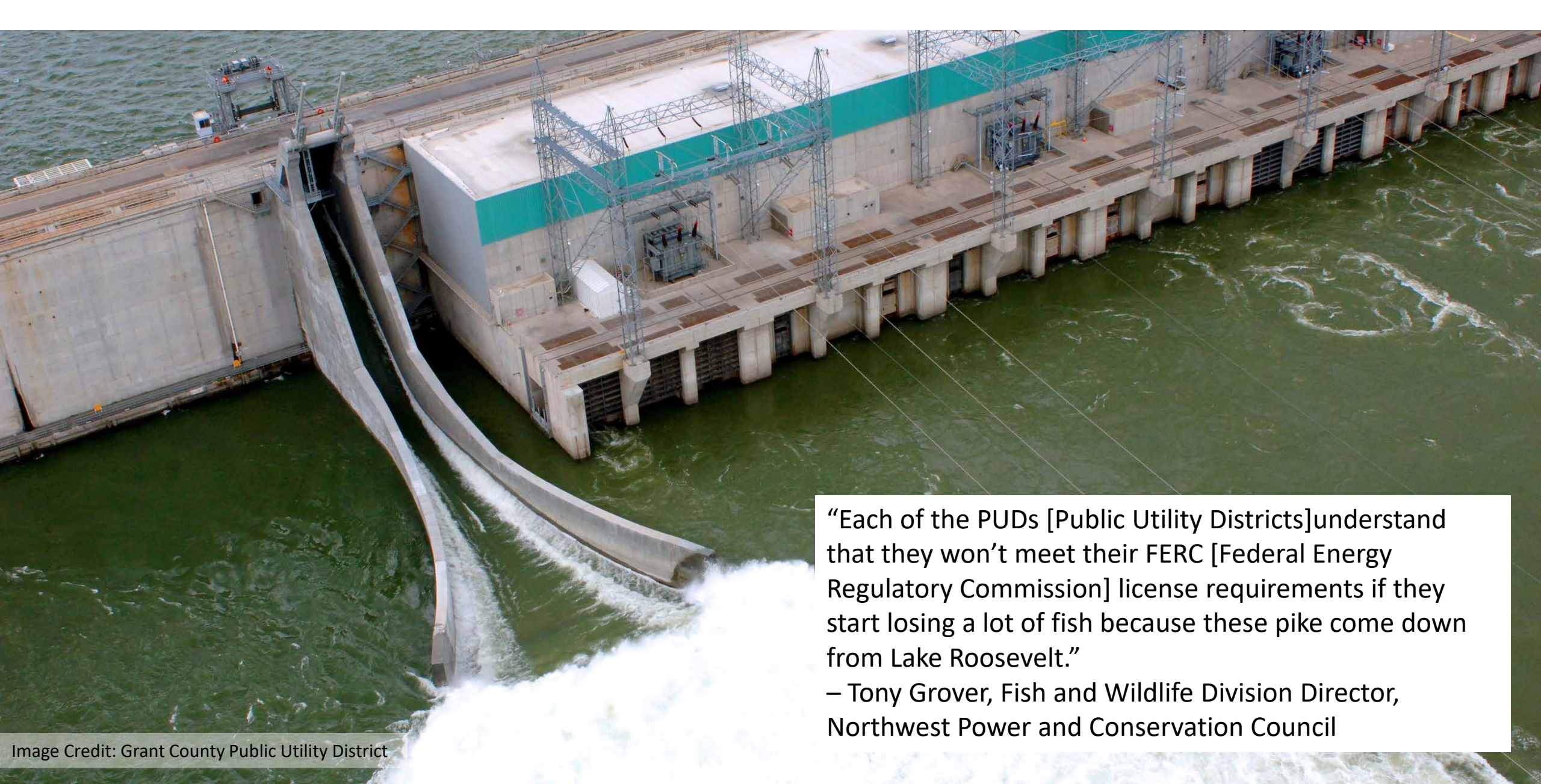


Image Credit:
Dave Rutz (retired), Alaska
Department of Fish & Game

Image Credit: U.S. Army Corps of Engineers



“The Hatcheries Division is the largest single component of WDFW's [Washington Department of Fish and Wildlife's] Fish Program, with 298 FTE employees and a total operating budget of \$63.9-million during the 2011-2013 Biennium, including \$11.1-million from the State General Fund. ”



“Each of the PUDs [Public Utility Districts] understand that they won’t meet their FERC [Federal Energy Regulatory Commission] license requirements if they start losing a lot of fish because these pike come down from Lake Roosevelt.”

– Tony Grover, Fish and Wildlife Division Director, Northwest Power and Conservation Council

Image Credit: Grant County Public Utility District

Image Credit:
Columbia River Intertribal Fisheries Commission



2018 Montana Invasive Species Summit |
Species with Potential Economic Benefits, Known Environmental Impacts |
Northern Pike



FINAL REPORT

Economic Analysis of the Non-Treaty Commercial and Recreational Fisheries in Washington State

December 2008





WA Governor's Office

News and updates from Gov. Jay Inslee and his administration.

Mar 14 · 5 min read

Inslee signs executive order to protect orcas, Chinook salmon

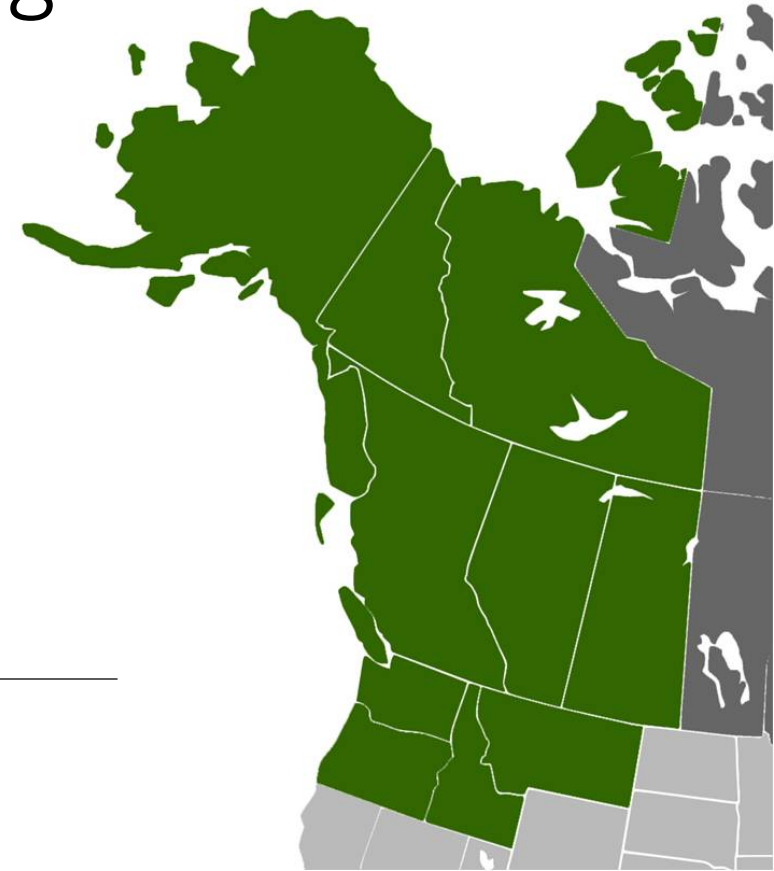
Both species are iconic to Washington and a vital part of tourism, maritime industries

“The research now points to the Columbia River being one of the critical sources of Chinook salmon to this population [Southern Resident Killer Whales]. In the winter months they are right off the mouth of the Columbia River feeding on spring Chinook”
– Ben Enticknap, Senior Scientist, Oceana

Pacific Northwest Northern Pike Forum and Coordination Meeting



July 14, 2018
1:00 p.m. to 4:00 p.m.



Known Risks and Potential Impacts



Fish Harvest

Tribal Harvest

- Tribal harvest valued at ~\$270K annually.
 - Kenaitze, Ninilchik, Eklutna, Knik tribal educational fisheries and Tyonek subsistence salmon fishery

Commercial Harvest

- Commercial fishing industry valued at \$1.2 billion annually.
 - Cook Inlet and Prince William Sound commercial fisheries

Recreational Harvest

- Recreational fishing industry valued at \$733 million per year.
 - Cook Inlet region recreational fisheries

Species Recovery

- More than \$4.1 million invested in salmon and trout recovery since 2011.
 - Pike suppression and eradication projects (not including permanent staff time)

Fish Hatchery Production and Returns

- More than \$2 million invested into hatchery production annually
 - Supports recreational fisheries in the Upper Cook Inlet Region

Cook Inlet Basin in Soutcentral Alaska where pike are not native and are considered an invasive species



State of Alaska (region where pike are not native)

Known Risks and Potential Impacts



Fish Harvest

Tribal Fisheries

- Commercial harvest value estimated at \$48.9 million in 2006.
- \$48.9 million does not reflect an economic value placed on personal use or ceremonial and subsistence use.

Commercial Fisheries

- Commercial harvest valued at \$65.1 million in 2006.

Recreational Fisheries

- 428,480 recreational anglers spent an estimated 904.8 million in 2006 on fishing-related equipment and trip-related items.

Species Recovery

- More than \$731 million invested in salmon recovery since 1991.

Fish Hatchery and Management Investment

- More than \$20 million invested annually by Washington Department of Fish and Wildlife.

Hydropower Operating Permit Requirements

State of Washington



Northern Pike

Collaboration and Regional Solutions



- What's the potential cost to the economy and environment of the Columbia River Basin?
- What actions can the lower Columbia River Basin take to prevent impacts to salmon and steelhead?
- If spread continues, how can Oregon and Washington quickly respond and what's the long-term strategy?
- How can we work together to avoid illegal fish introductions?

☰ **Northwest Sportsman**
Your Local Hunting & Fishing Magazine

Northern Pike Netted On Lake Washington

Tribal biologists surveying Lake Washington for walleye and bass populations caught a whole 'nother, unexpected predator species last week.

A northern pike.

(MERCER ISLAND POLICE AND EMERGENCY MANAGEMENT VIA MUCKLESHOOT TRIBE VIA WDFW)

Northern Pike

Collaboration and Regional Solutions



- What's the potential cost to the economy and environment of the Columbia River Basin?
- What actions can the lower Columbia River Basin take to prevent impacts to salmon and steelhead?
- If spread continues, how can Oregon and Washington quickly respond and what's the long-term strategy?
- How can we work together to avoid illegal fish introductions?

Questions? Thanks!

**Justin Bush, Executive Coordinator
Washington Invasive Species Council
State of Washington Recreation &
Conservation Office**

Justin.Bush@rco.wa.gov

360-902-3088

InvasiveSpecies.wa.gov

