

RUSH SKELETONWEED

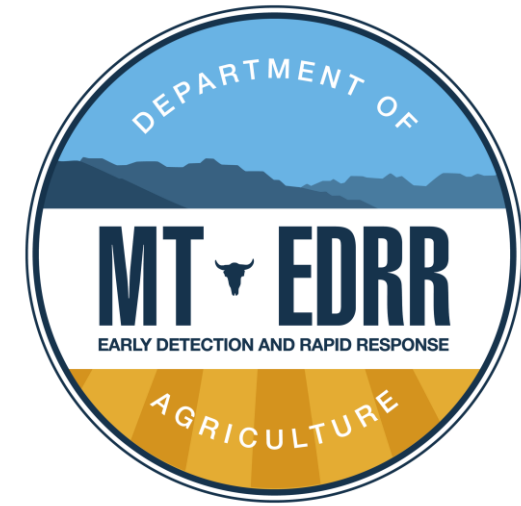
Josh Wagoner, MDA



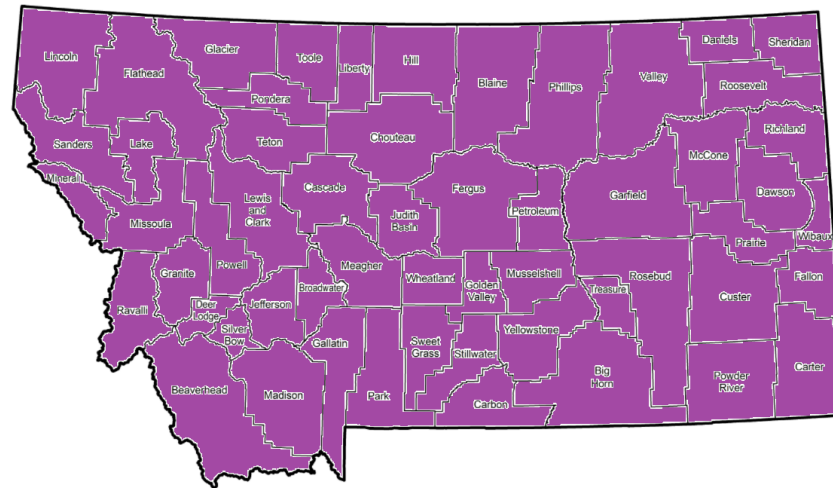


1920

Why?



1991



Spotted Knapweed

- Infesting 2-5 million acres
- estimated to cost the state \$42 million per year in direct and indirect costs

Rush Skeletonweed

(1B, limited presence in Montana)
(*Chondrilla juncea*)



Plant



Rosette



Flower



Leaf



Seed



Stem



Root

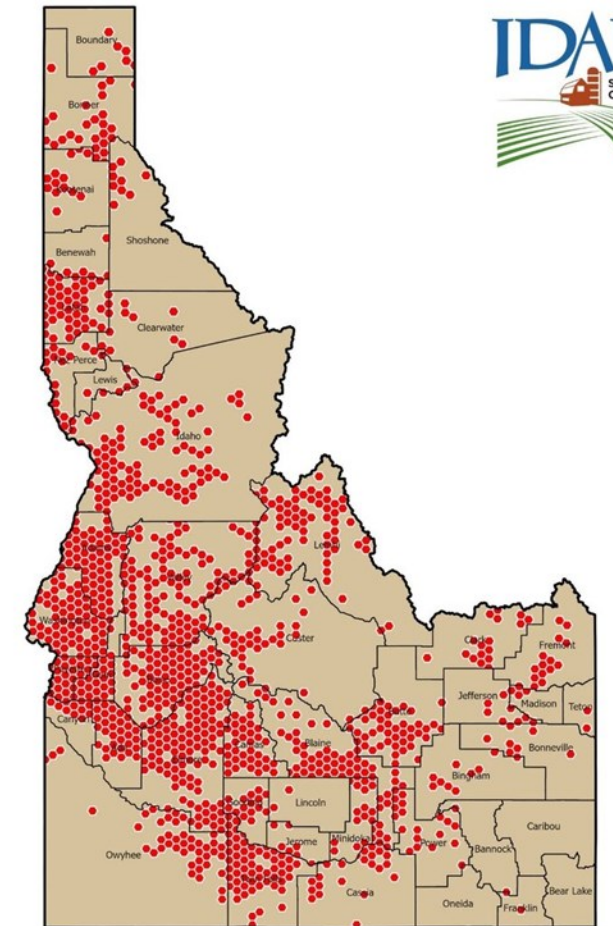


Invading

- 4 million acres in Idaho & 6.2 million acres in the western U.S.



RUSH SKELETONWEED DISTRIBUTION MAP









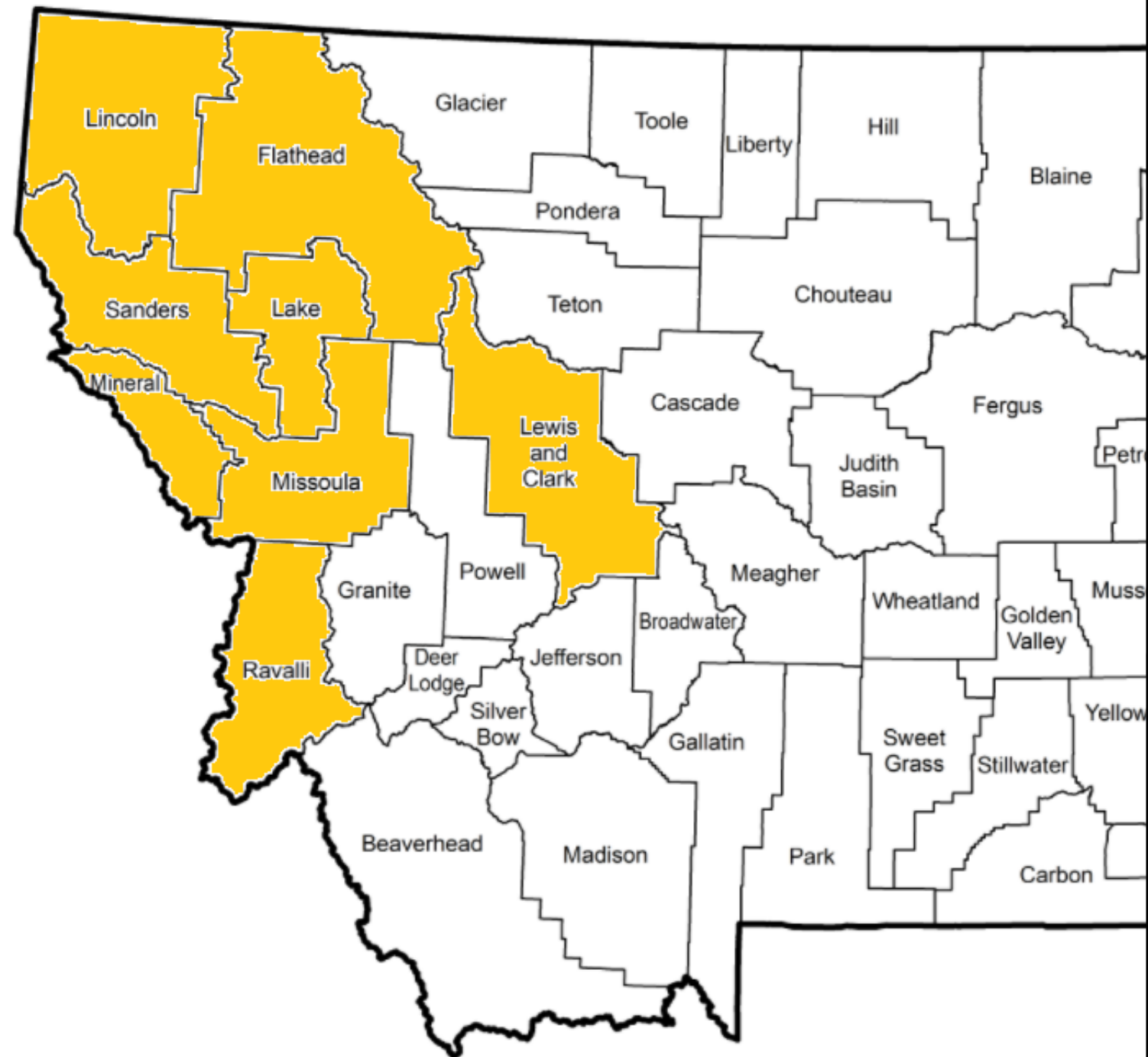








- Most serious weed in Australia's wheat growing regions, reducing yields by as much as 80%
- Widespread and problematic in Idaho, Washington and Oregon wheatland



- “Many landowners become increasingly frustrated in attempting to control this noxious weed. Herbicides seem to have little impact on the weed after it bolts, but that is often when it is first found. The best control strategy is preventing an invasion before it takes hold, and then eradicating small patches as soon as they appear.” – Washington State Noxious Weed Control Board

