

# EASTERN & ROMAN SNAILS

Carson Thomas, MDA



# Updates on Japanese Beetle in Montana



Carson Thomas

Montana Department of Agriculture

# Japanese Beetle

*Popillia japonica* 'Newman'



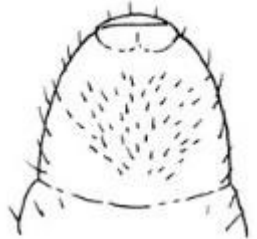
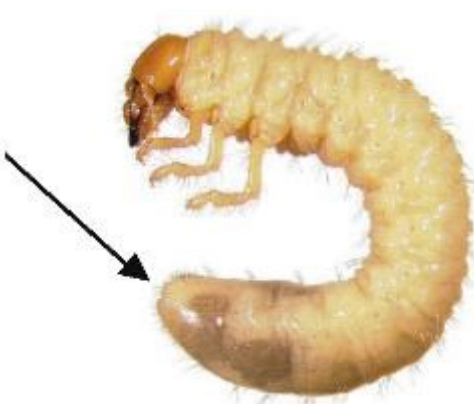
# Japanese Beetle Damage

*Popillia japonica* 'Newman'



# Japanese Beetle

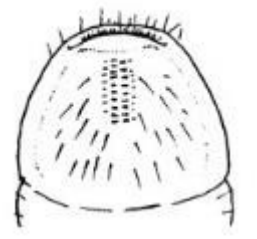
## Grub Look-alikes “White Grubs”



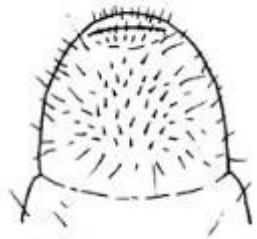
Black turfgrass ataeenius



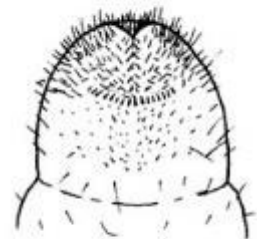
Aphodius spp.



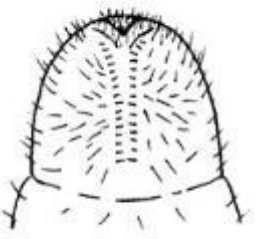
Green June beetle



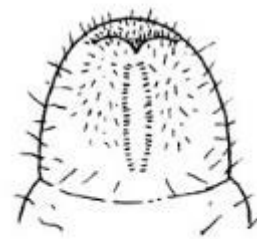
Northern-southern masked chafer



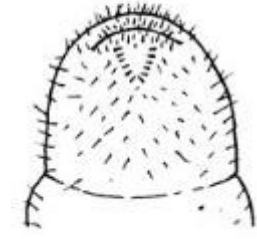
Asiatic garden beetle



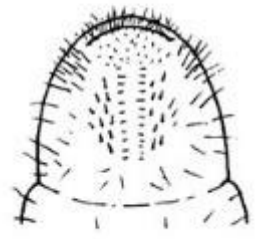
European chafer



May or June beetle



Japanese beetle



Oriental beetle.



May-June Beetle



Green June Beetle



Masked Chafer



Japanese Beetle



European Chafer



Oriental Beetle



Asiatic Garden Beetle



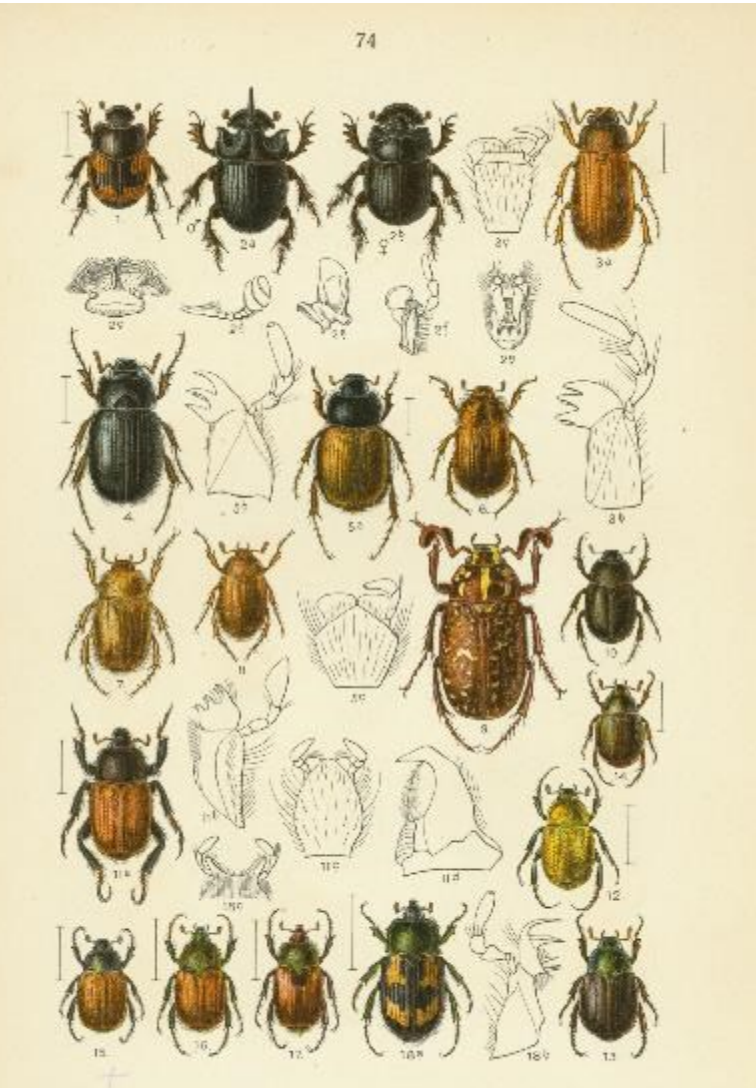
Black Turfgrass Ataeenius



Aphodius

# Japanese Beetle

## Adult Look-alikes

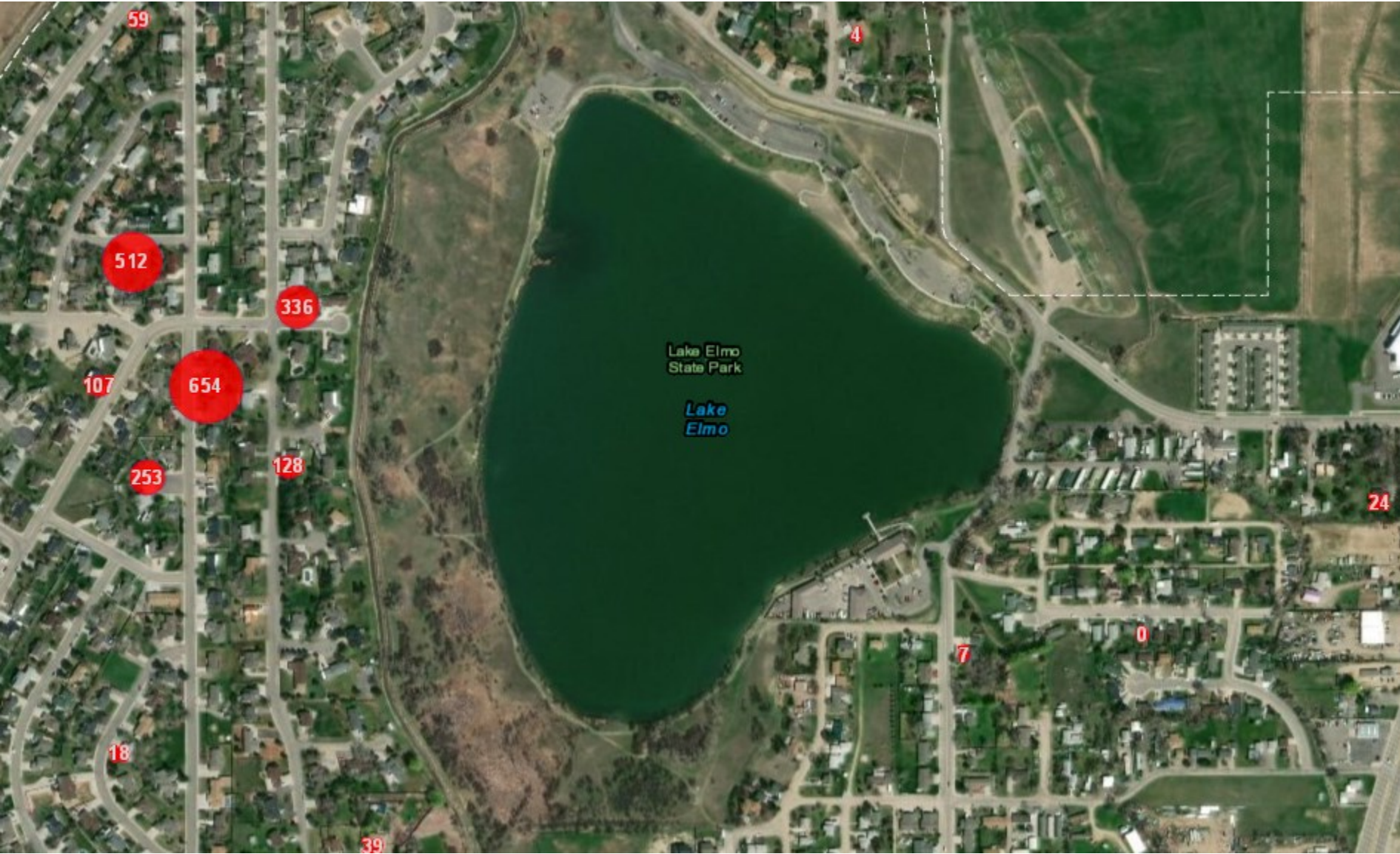


1. *Caccobius* Schreb. 2. *Copris* lunaris. 3. *Serica* bunnia. 4. *Maladera* holosericea.  
 5. *Homalopta* ruficollis. 6. *Rhizotrogus* aestivus. 7. *Amphimallus* substriatus. 8. *ansimilis*.  
 9. *Polyphylla* fulva. 10. *Hoplia* philanthis. 11. *pratensis*. 12. *laevissima*. 13. *Anomala*  
*surata*. 14. *senae*. 15. *Phyllopertha* horticola. 16. 17. *Anisoplia* segetum. 18. *cyathigera*.





# 2018: Over 2,100 JB trapped in neighborhood



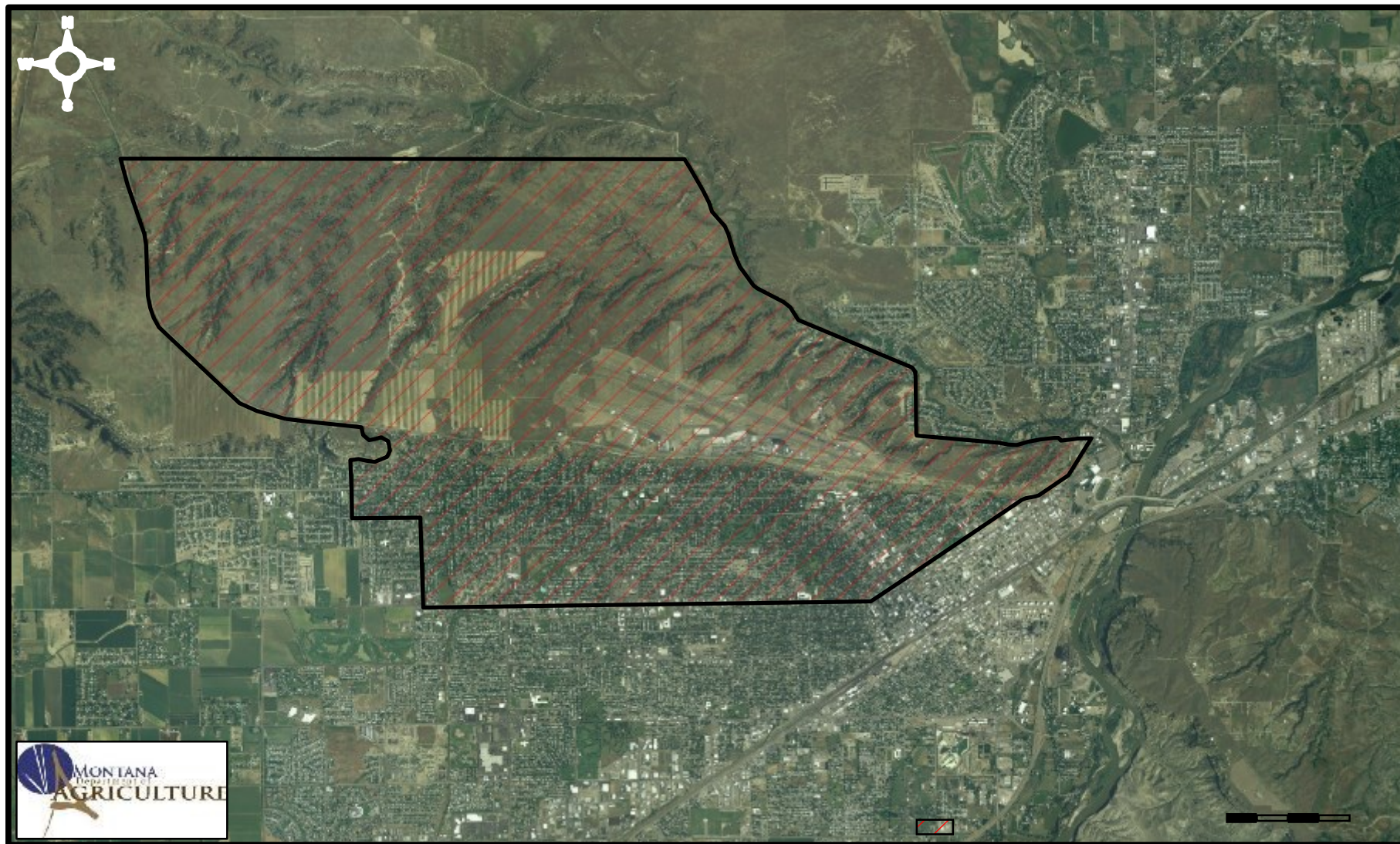


# Japanese Beetle In Montana

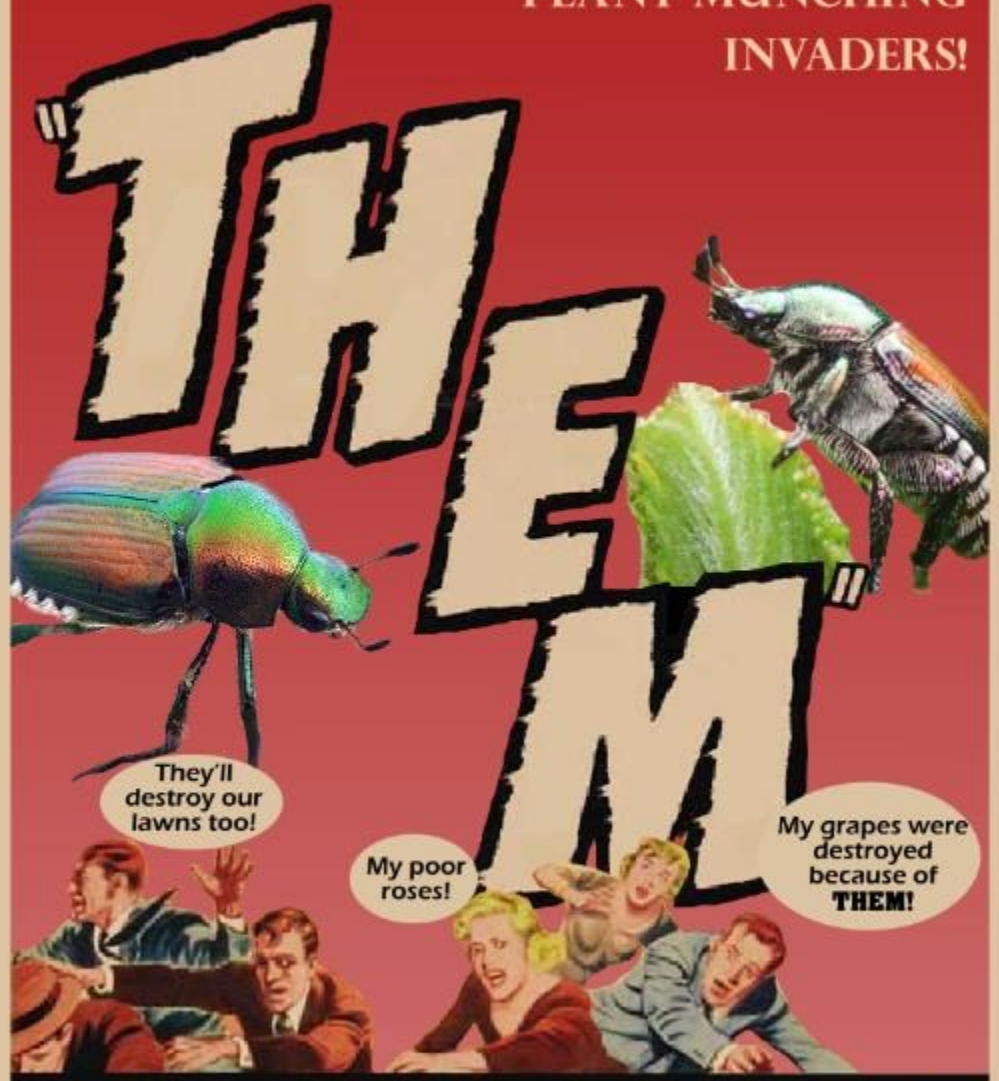
- 1916 *Popillia japonica* is introduced to U.S. from Japan
- 1998 JB first discovered in Billings
- 2005 JB population established below the rimrocks, MSU-B
- 2007 Voluntary treatment of residential lawns begins
- 2008 an interior quarantine was issued for a section of Yellowstone Co.
- 2009 Eradication continues
- 2010-2017 MDA trapping at Billings area nurseries that ship plants out-of-state
- 2018 Over 2,000 JB trapped above rimrocks near Lake Elmo
- 2019 1,804 JB Trapped, primarily in the Lake Elmo Area
- 2020 1,526 JB Grant Secured for voluntary granular pesticide
- 2021 1,971 JB Pesticide distribution begins
- 2022 1,693 JB Grant Ends
- 2023 1,876 JB
- 2024 **3,970** JB Trapped



# Japanese Beetle In Montana



A HORROR HORDE OF CREEPY-CRAWLY  
PLANT MUNCHING  
INVADERS!



***Popillia japonica* - The Invasive Japanese Beetle**

This poster brought to you by the  
Montana Department of Agriculture Nursery Program  
For more information visit [agr.mt.gov/nursery-program](http://agr.mt.gov/nursery-program)

