

# The Battle for Lake Elmo

Craig McLane  
AIS Monitoring Coordinator

[cmclane@mt.gov](mailto:cmclane@mt.gov)

406-438-2592



# Lake Elmo State Park

- Created in 1904 to store irrigation water
- State park in 1983
  - 126 ac (64 ac reservoir)
- Multiple uses
- High visitation
  - ~ 170,000 visitors in 2019



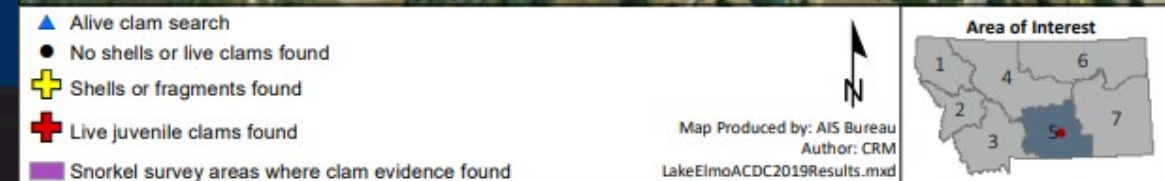
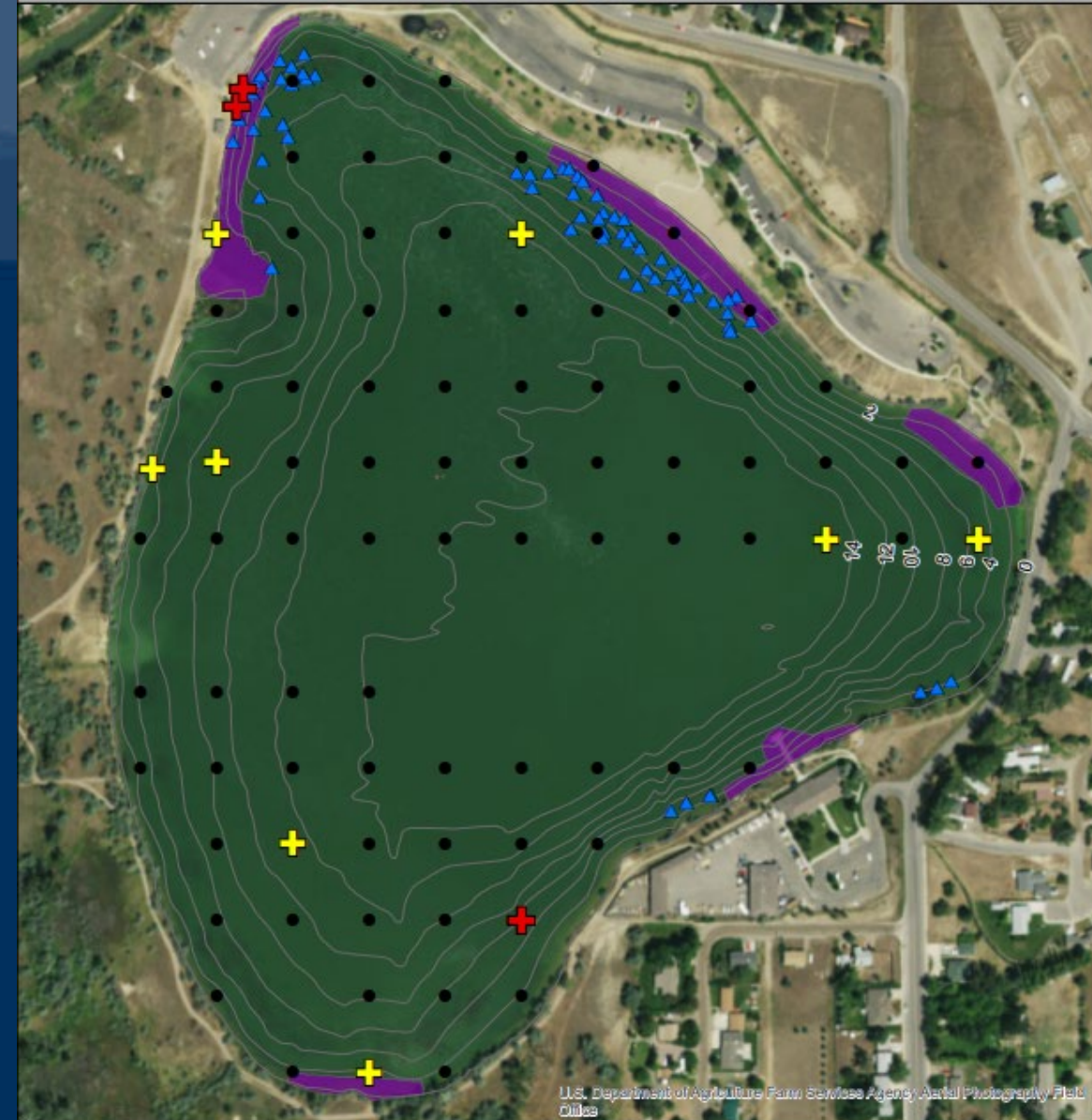
Lake Elmo in 1977

Photo Western Heritage Center and Kevin Kooistra



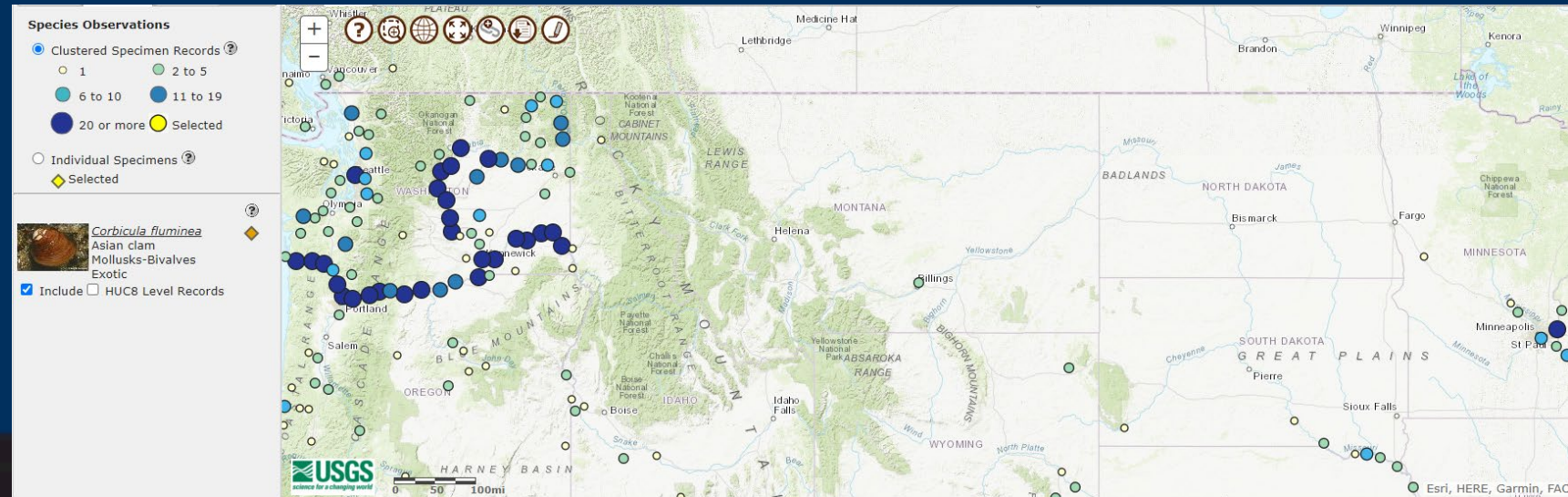
# Corbicula in Lake Elmo

- Detected during Aquatic Invasive Species (AIS) training summer of 2019
  - Only waterbody in MT with known Asian Clams
- Additional surveys found:
  - Alive and dead clams
  - No detection outside of Lake Elmo
  - Multiple year-classes
- Unknowns:
  - When clams were introduced
  - Source



# *Corbicula fluminea*

- Clam - Bivalve (two shells hinged together)
- Native to SE Asia
- Small
  - Larvae: microscopic
  - Juveniles: ~ 1 mm
  - Adults: ~ 50 mm
- Filter feeder
  - Eats tiny aquatic life
- Prefers shallow, sandy and gravel places



# Drawdown, Habitat Improvement, and Park Enhancement Funding

Contributor	Amount	Use
FWP (AIS, Dingle-Johnson Funds, Parks, Trail Grant Match, etc.)	\$399,000	Dewatering Lake (equipment rental & pumping contract) Habitat Improvement Trails & Park Safety
DNRC AIS Grant	\$30,000	Dewatering Lake (equipment rental & pumping contract)
Yellowstone Conservation District	\$50,000	Outlet Structure
Future Fisheries Grants	\$46,000	Habitat Improvement
Community Ponds Grants	\$25,000	Habitat Improvement
Trail Grant	\$50,000	Trail & Park Safety
PikeMasters	\$10,000	Habitat Improvement
BASS Federation	\$5,000	Habitat Improvement
Total	≈ \$596,000	

# Lake Elmo – Corbicula Clam Eradication











WALKWAY  
TO  
RIVER  
VIEW  
POINT

WALKWAY  
TO  
RIVER  
VIEW  
POINT





# Future Corbicula Eradication Plans

- Continue annual monitoring – Nothing found in 2022
- Intensive surveys starting 2023
  - Benthic sled, ponar dredge, snorkel/scuba transects
- No positives for 5 years = success



# Contact Information

Craig McLane

AIS Monitoring Coordinator

406-438-2592

[cmclane@mt.gov](mailto:cmclane@mt.gov)

